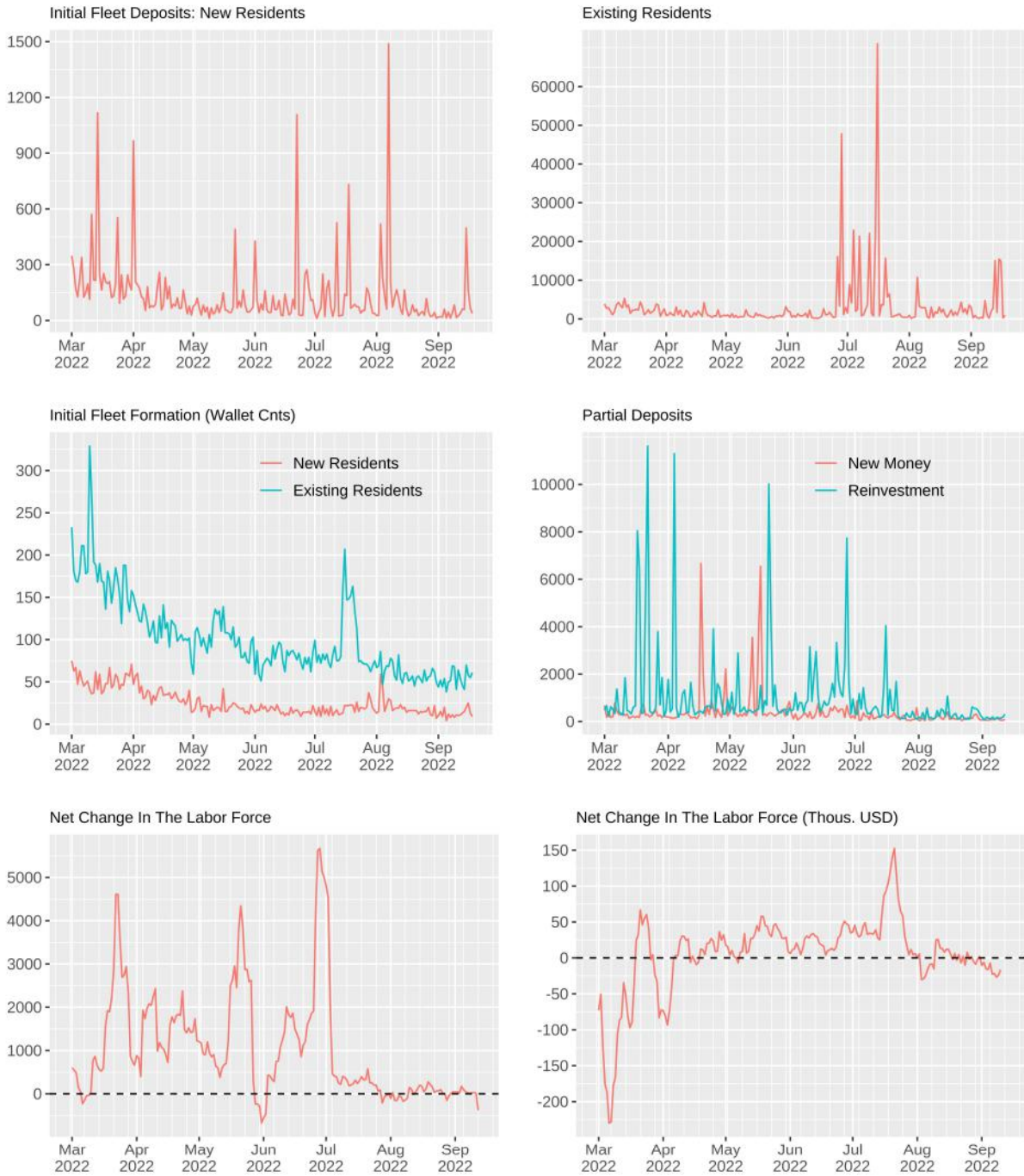


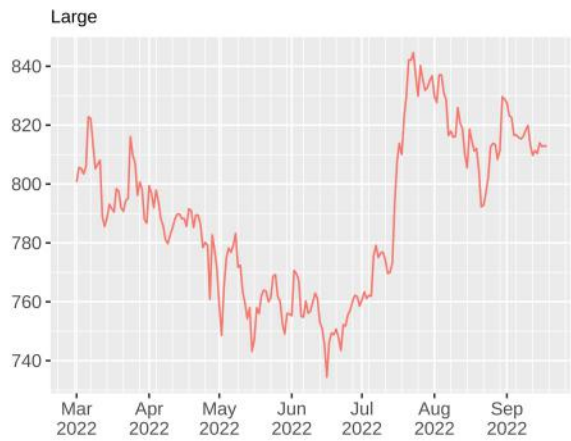
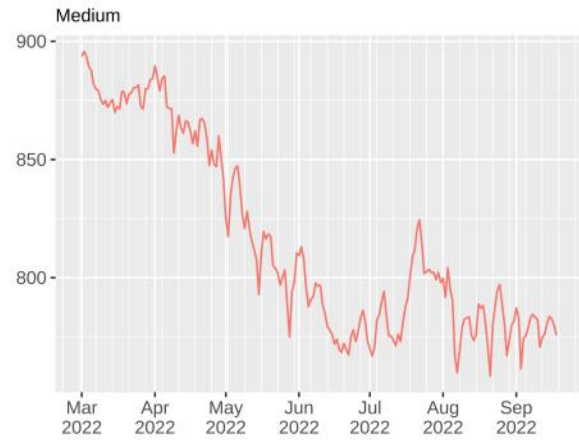
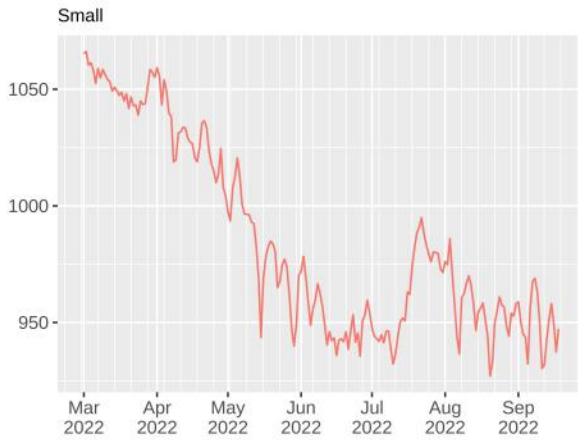
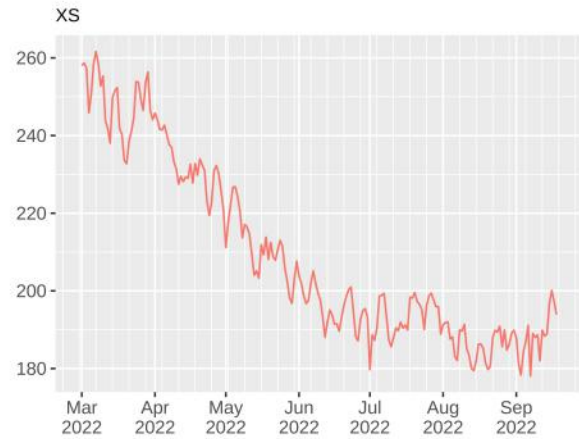
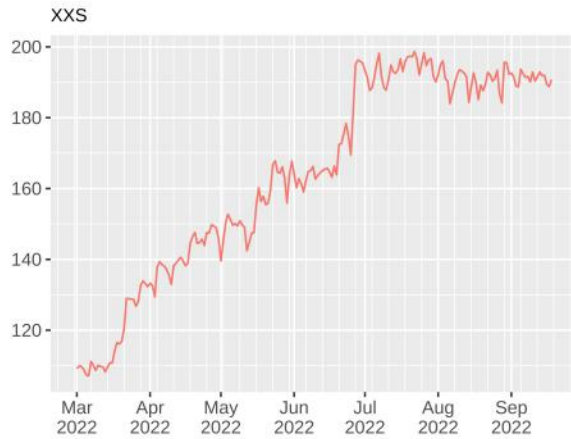
## A.2 Labor Force, Employment and Earnings Statistics

### A.2.1: Labor Force Flows



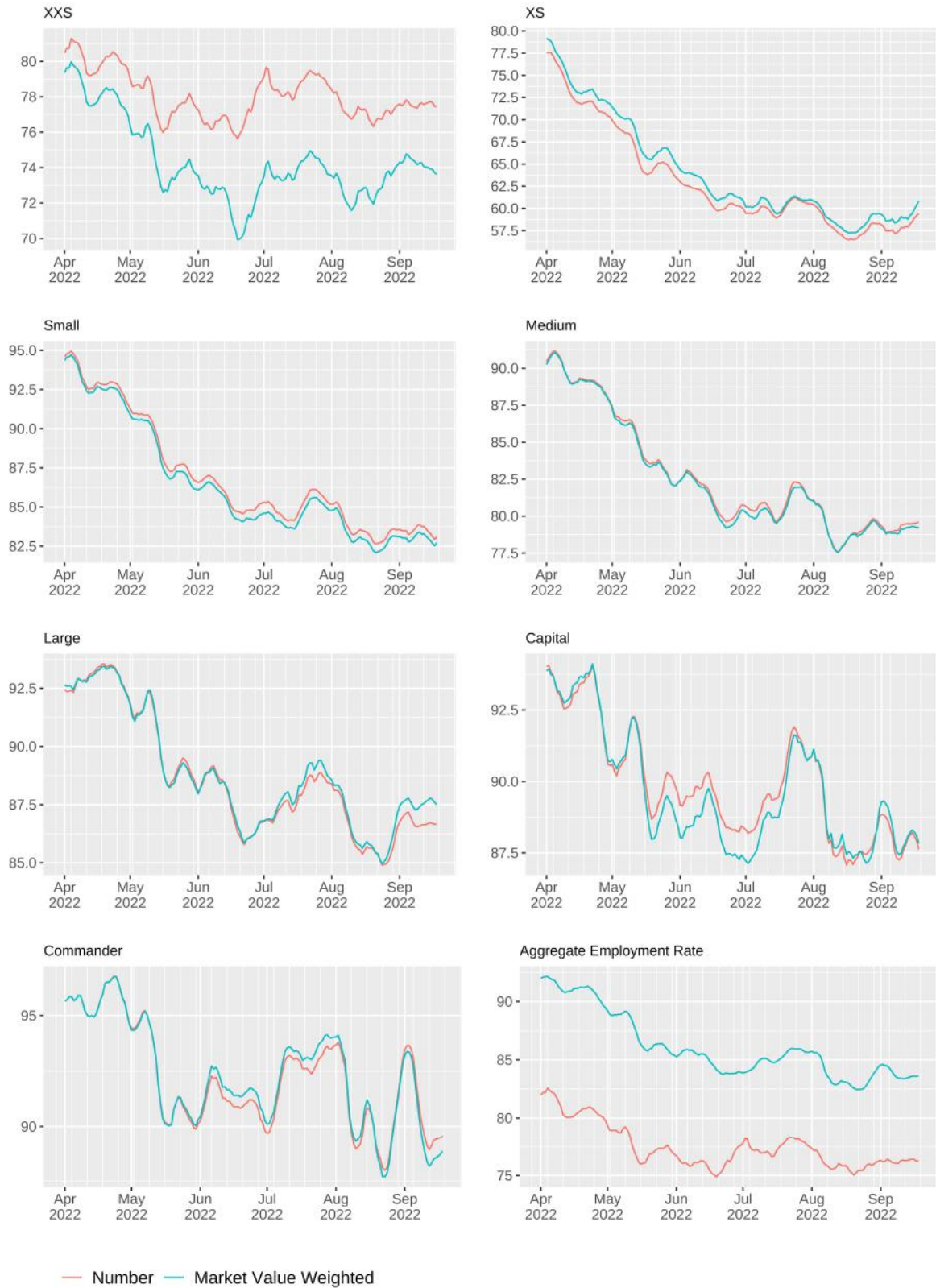
Source: ATMTA, Inc. Economics Department. Notes: Net change in the labor force is defined in terms of ships and is equal to the seven-day moving average of initial deposits + partial deposits - closed fleet accounts. The net change in the market value of the labor force is in thousands of USD; seven-day moving average.

A.2.2: Aggregate Net Wages By Ship Class (Thous. ATLAS per day)



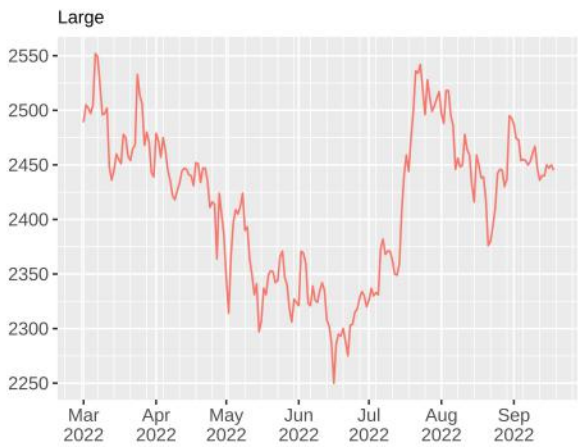
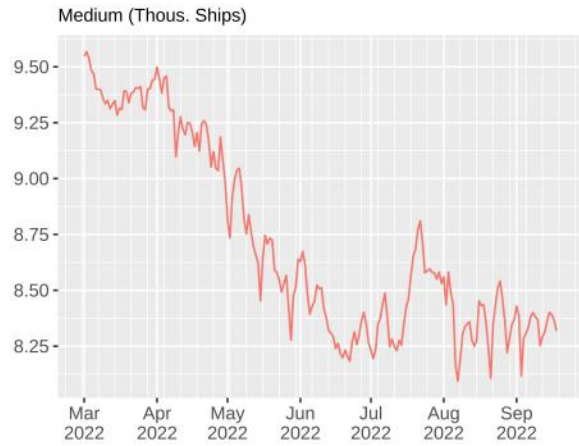
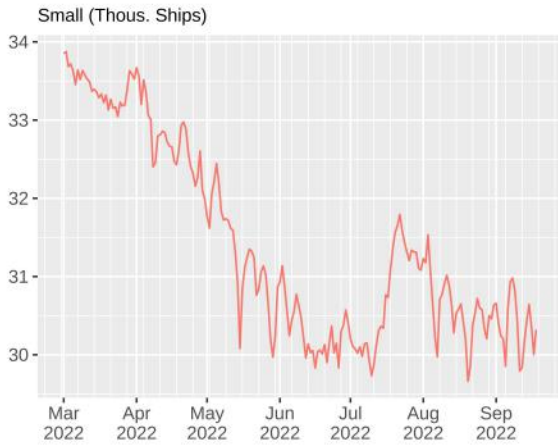
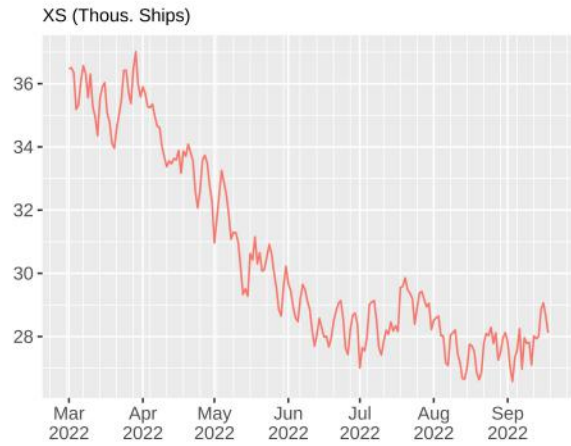
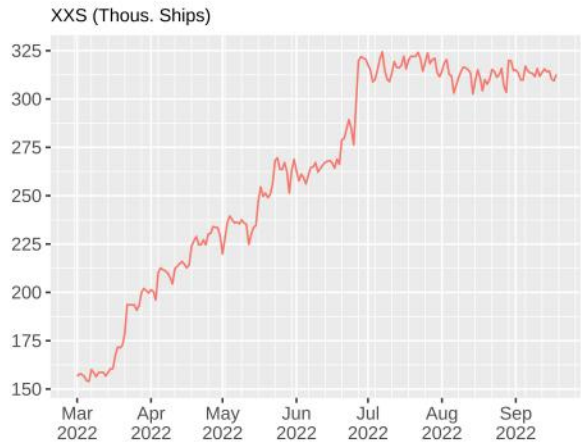
Source: ATMTA, Inc. Economics Department  
 Notes: Net ATLAS wages subtract out R4 costs.

### A.2.3: Aggregate Employment Rates By Ship Class - Unweighted and Market Value Weighted



Source: ATMTA, Inc. Economics Department. Notes: Seven-day rolling average. The market value weighted employment rate takes into account the differences in a ships market value. It reduces the impact that XXS and XS ships have on the over-all employment rate.

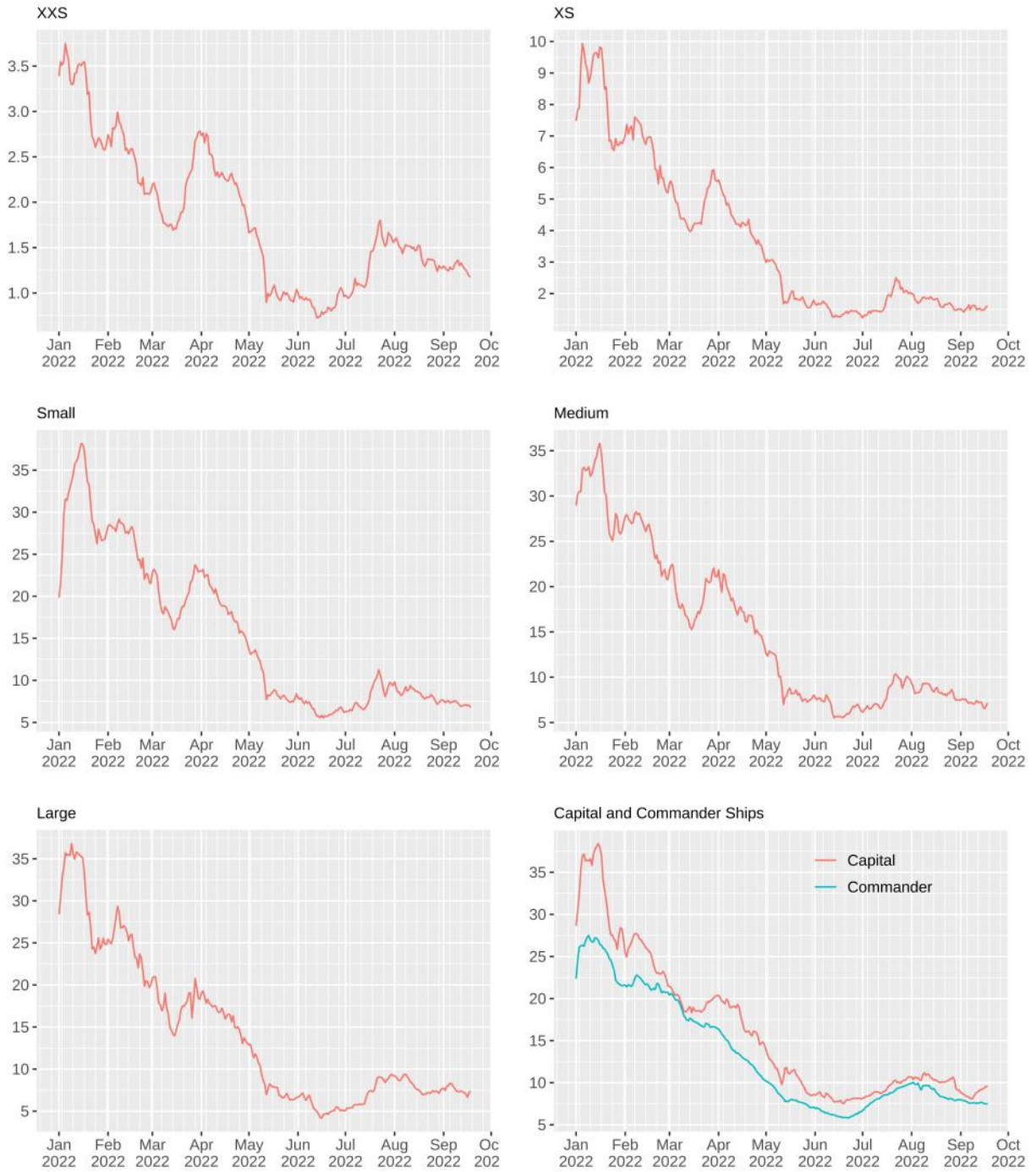
A.2.4: Aggregate Employment By Ship Class (Ships per day)



Source: ATMTA, Inc. Economics Department.

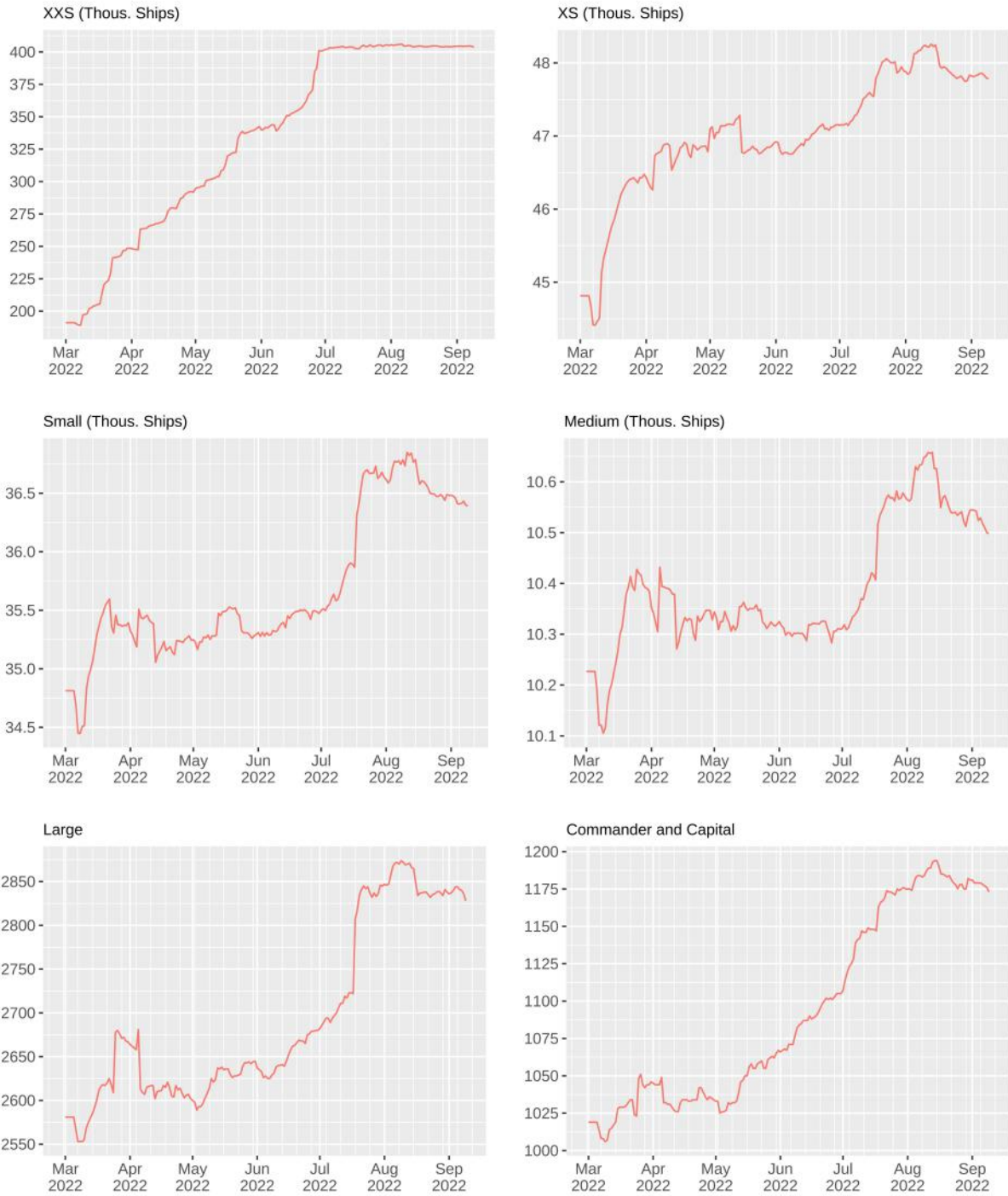


A.2.5: The Market Value of Employed Ships By Class (Mil. USD)



Source: ATMTA, Inc. Economics Department. Notes: The market value of employed ships of a specific type equals the number of employed ships multiplied by that ship's latest transaction prices. The market value by class is the total of the individual ship market values.

### A.2.6: Labor Force By Ship Class (Ships per day)



Source: ATMTA, Inc. Economics Department. Notes: The number of ships of a certain class associated with S.C.O.R.E. staking accounts.

### A.2.7: Ship Market Values and Prices By Labor Force Status

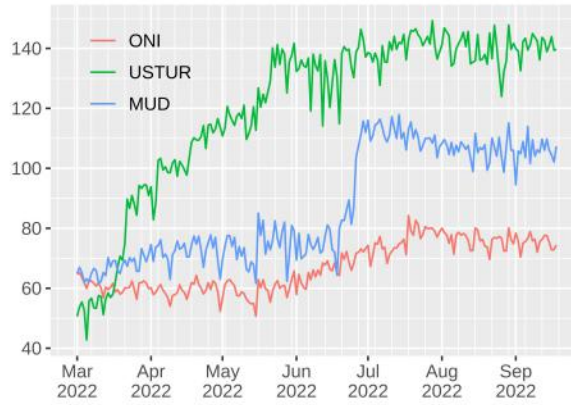


Source: ATMTA, Inc. Economics Department. Notes: Ships out of the labor force are found directly in player wallets and are not associated with a S.C.O.R.E. account. Employed ships are those earning as reflected by the last food refill action date relative to the number of days the ship could go without being refilled. Unemployed ships are associated with a S.C.O.R.E. account but are not actively earning ATLAS.

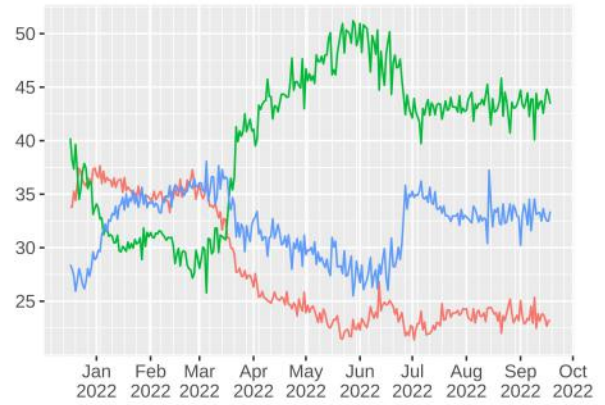
## A.3 Faction Update

### A.3.1: Faction Activity in S.C.O.R.E.

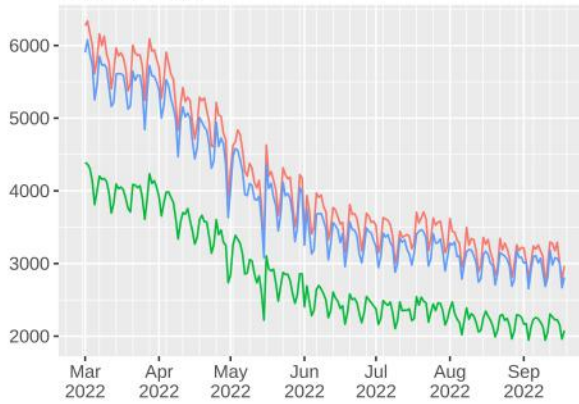
Daily Active Ships (Thous. Ships)



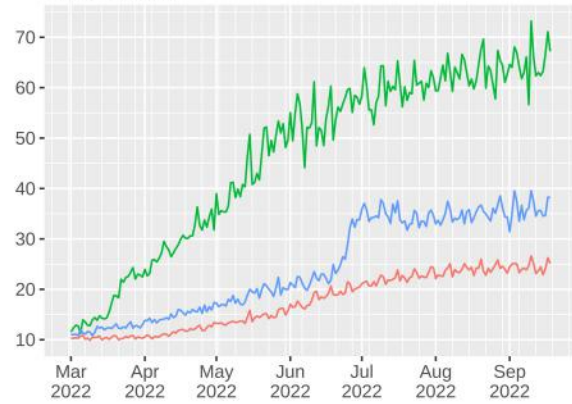
Faction Share of Daily Active Ships



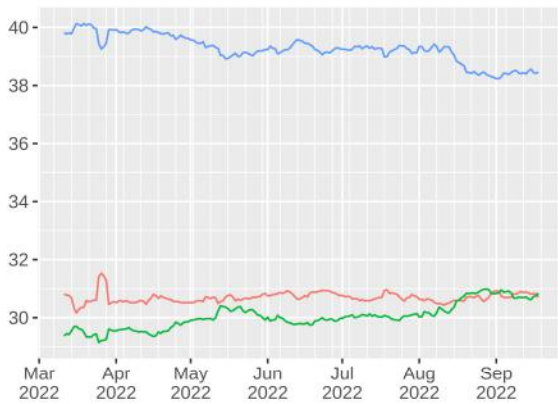
Daily Active Players



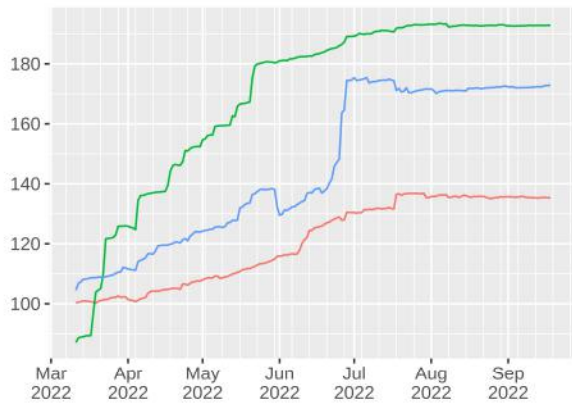
Ships Per Player



Faction Share By Market Value



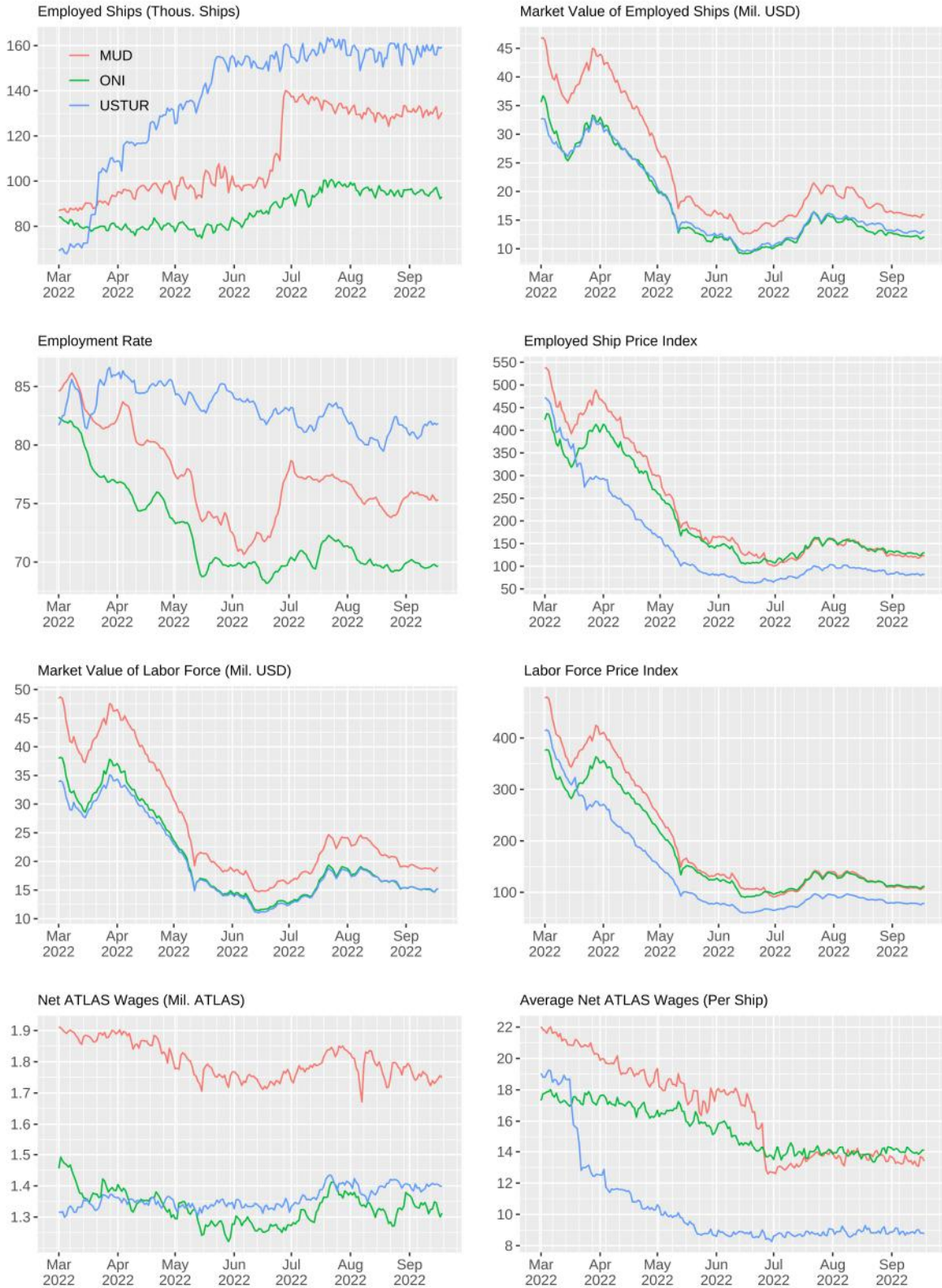
Ships in SCORE (Thous. Ships)



Source: ATMTA, Inc. Economics Department and Flipside  
 Notes: Total ships deposited in thousands (data from Flipside). Ship market-values by faction are expressed as a percentage of the total.

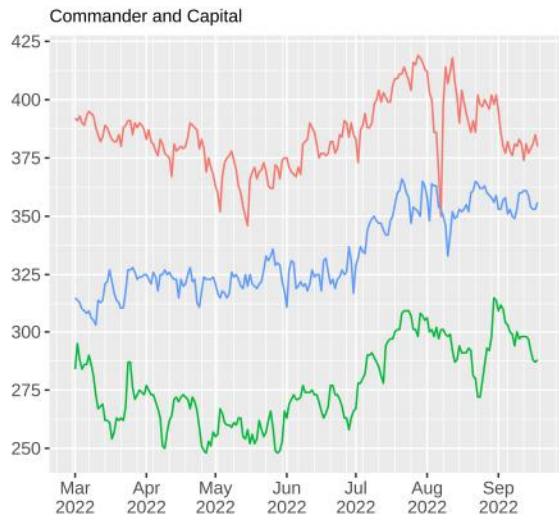
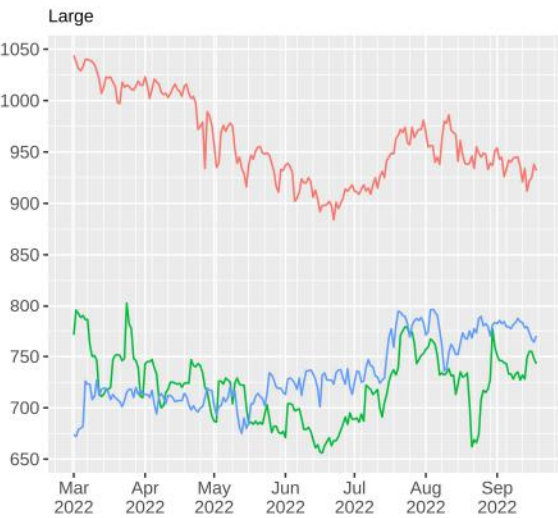
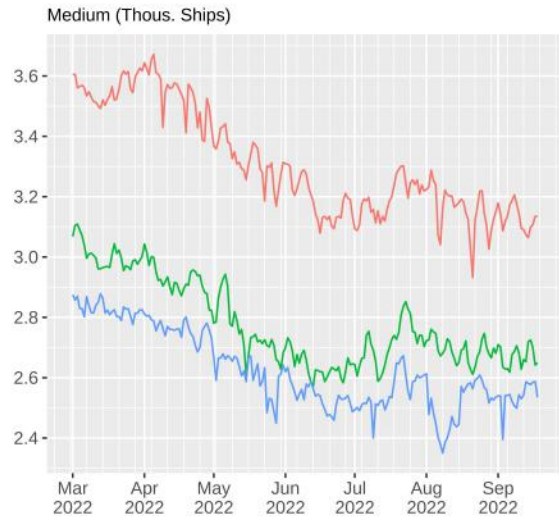
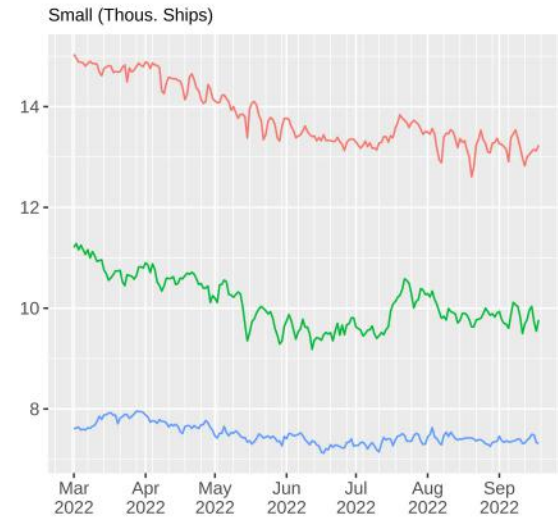
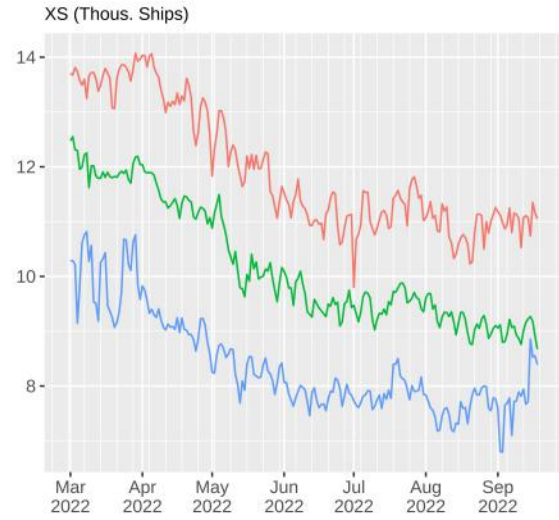
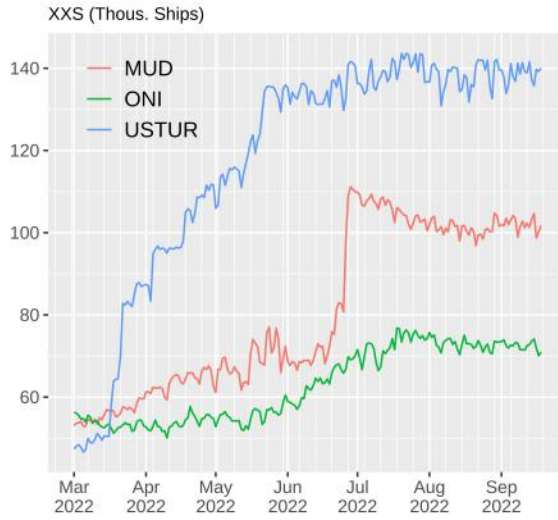


### A.3.2: Faction Employment and Earnings



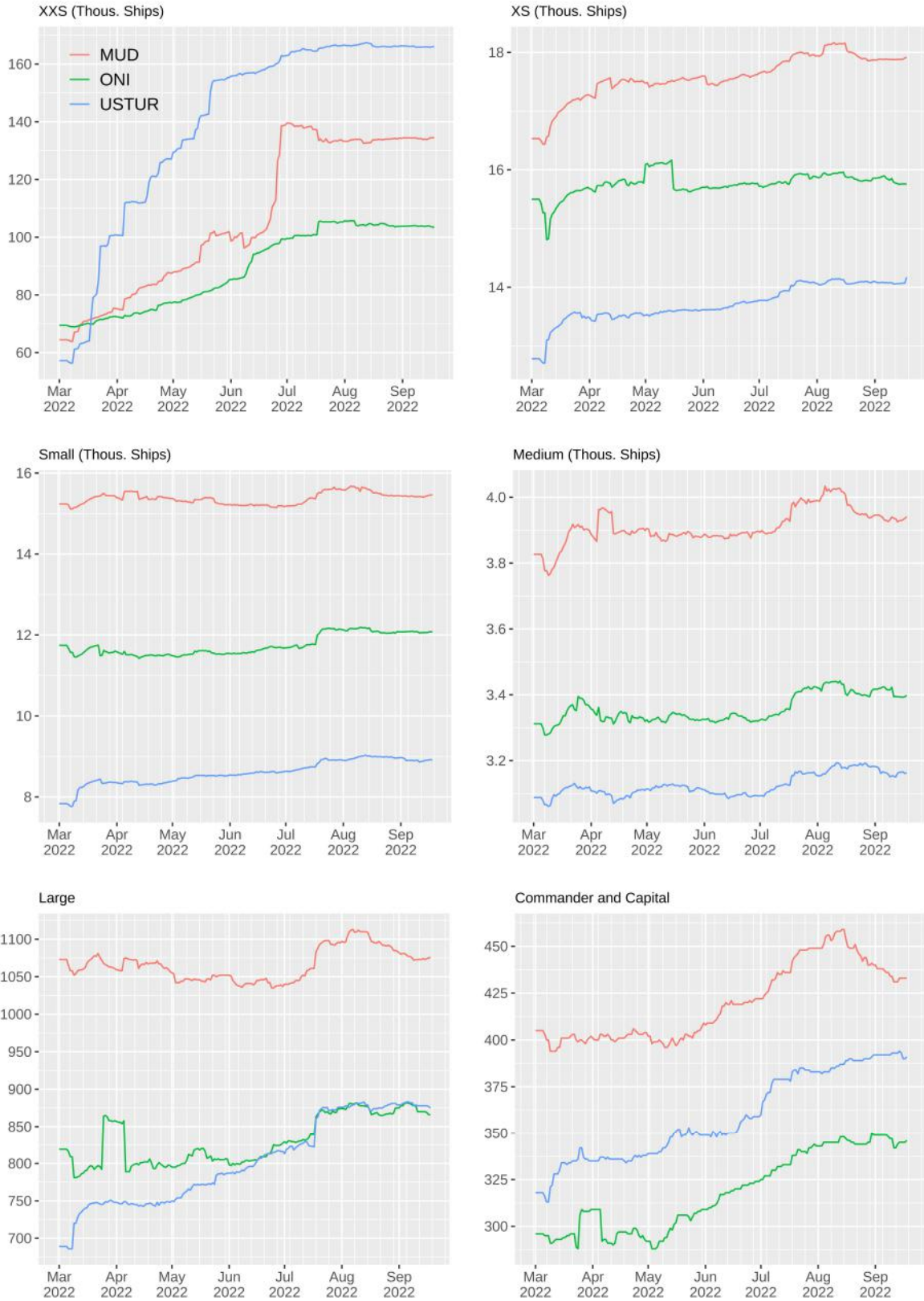
Source: ATMTA, Inc. Economics Department and Flipside  
 Notes: Total ships deposited in thousands (data from Flipside). Ship market-values by faction are expressed as a percentage of the total.

### A.3.3: Aggregate Employment By Ship Class (Ships per day)



Source: ATMTA, Inc. Economics Department

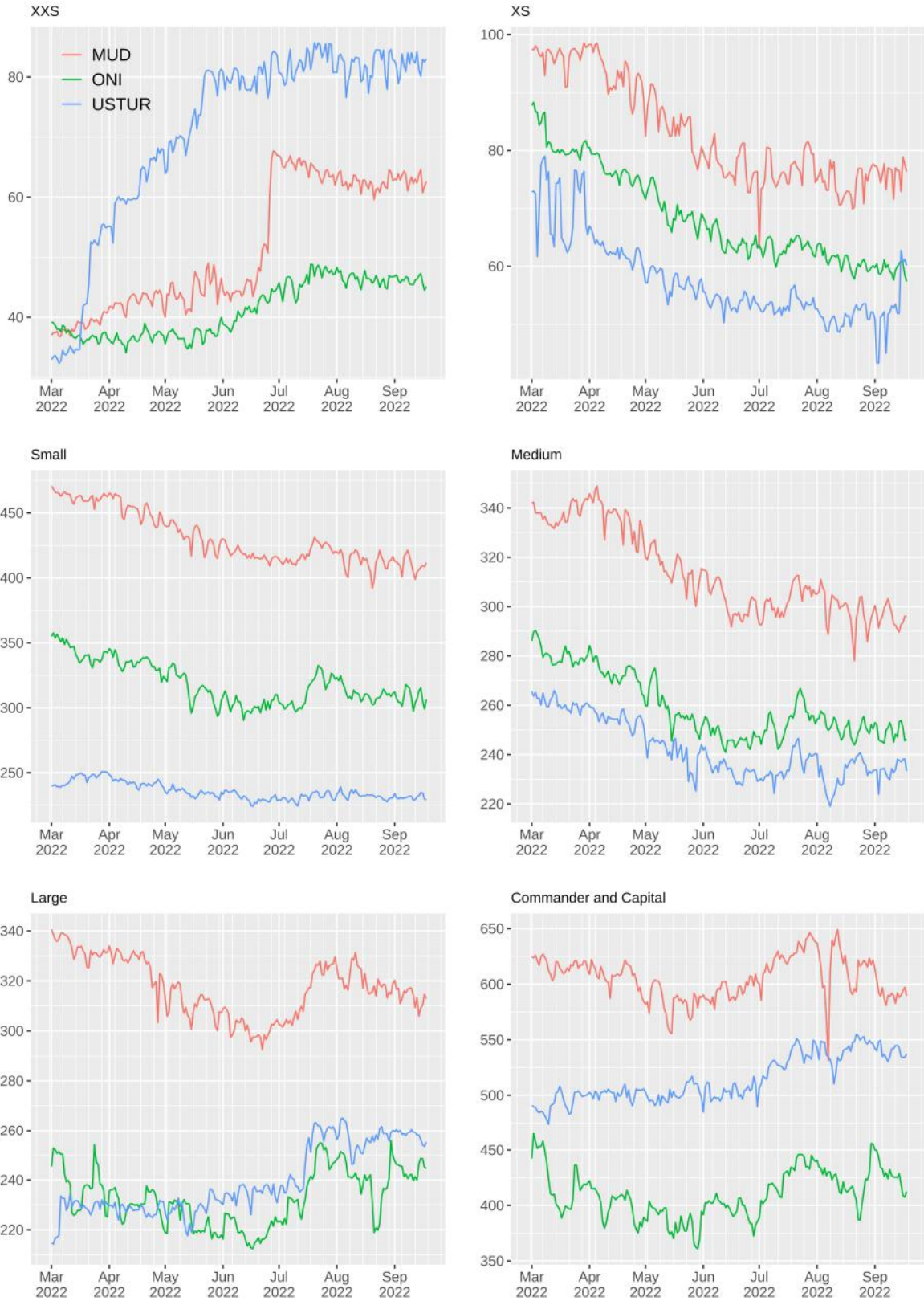
### A.3.4: Aggregate Labor Force By Ship Class (Ships per day)



Source: ATMTA, Inc. Economics Department



A.3.5: Net Wages By Ship Class (Thous. of ATLAS per day)



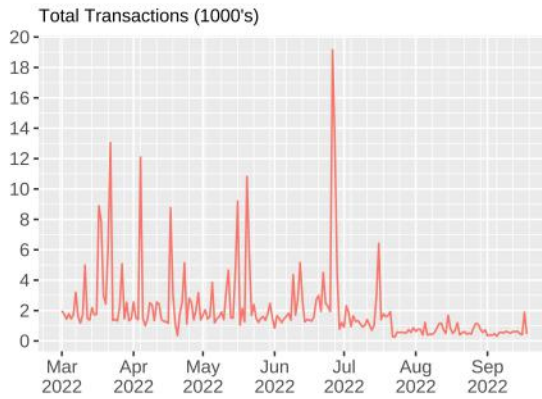
Source: ATMTA, Inc. Economics Department



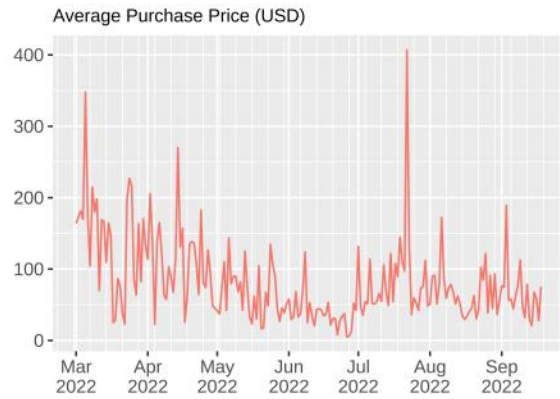
## A.4 Ship Market Summary

### A.4.1: Ship Market Summary

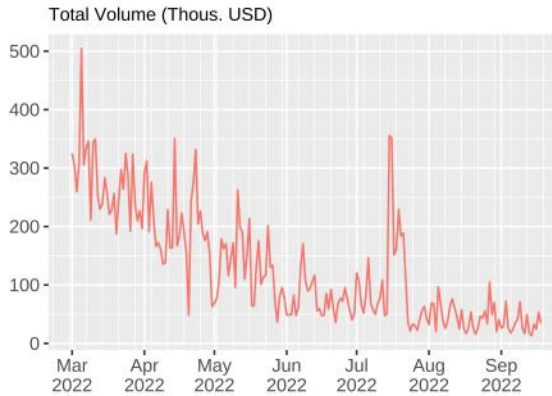
A



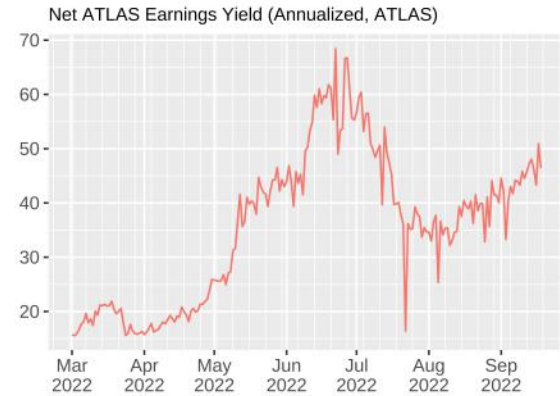
B



C



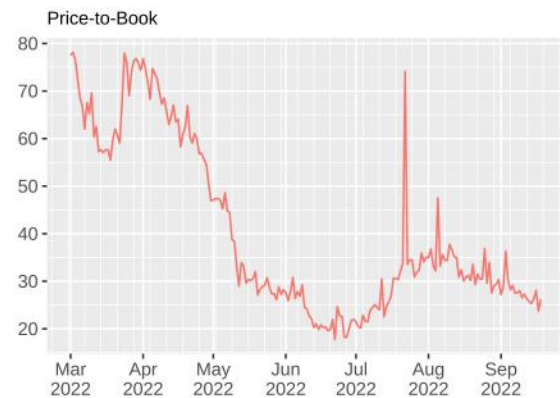
D



E

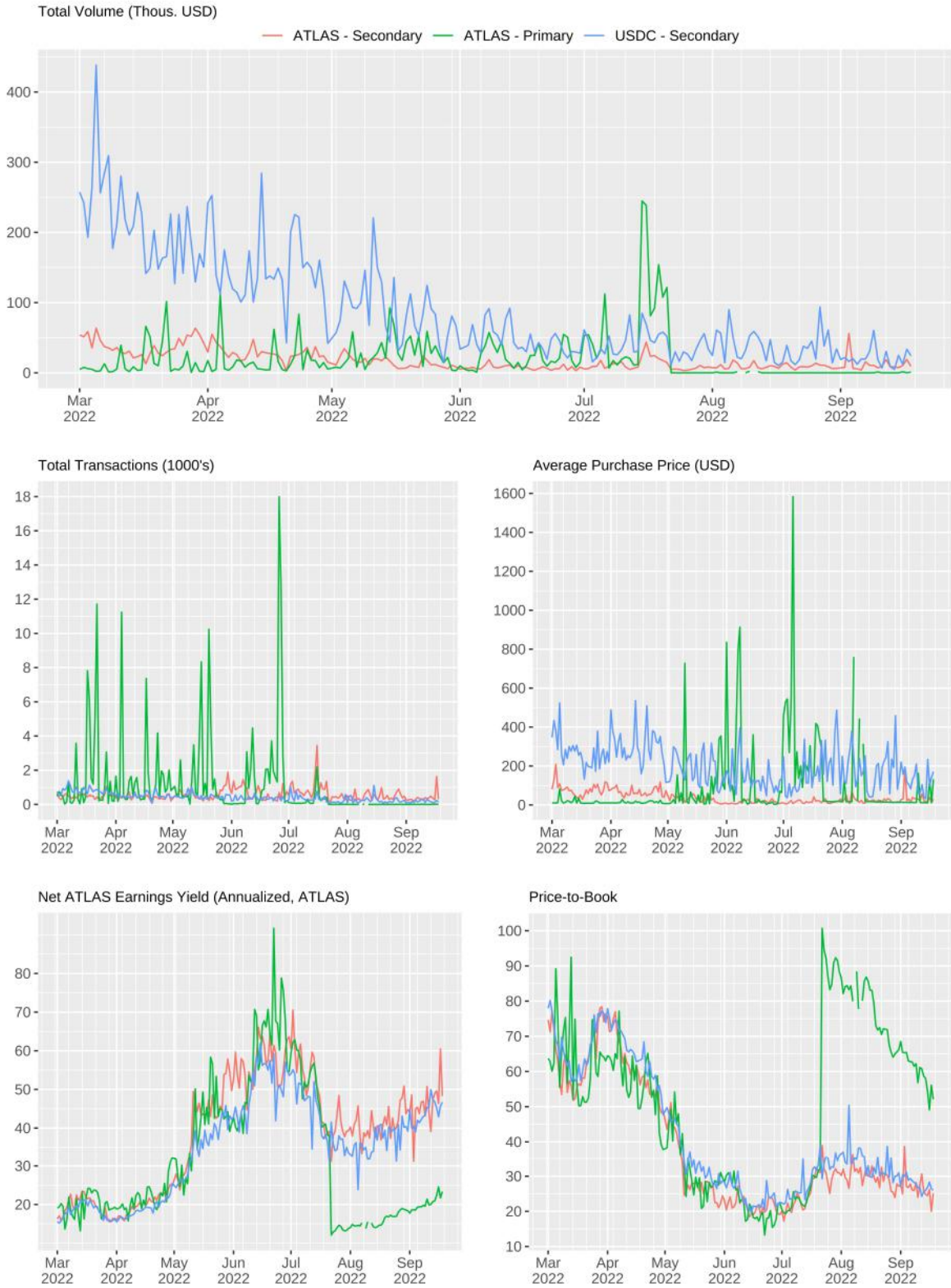


F



Source: ATMTA, Inc. Economics Department.  
 Notes: Total volume is the sum of all transactions converted to USD. Net ATLAS earnings yield = [Net ATLAS earnings of the purchased ships x 365]/[Market Volume (in USD)]; Net earnings yield = [Net ATLAS earnings of the purchased ships x 365 x (ATLAS/USD)]/[Market Volume (in USD)];  
 Price-to-Book = [USD Volume/Total VWAP] x 100.

### A.4.2: Ship Market Summary By Sale Type



Source: ATMTA, Inc. Economics Department.  
 Notes: Total volume is the sum of all transactions converted to USD. Net ATLAS earnings yield = [Net ATLAS earnings of the purchased ships x 365]/[Market Volume (in USD)];  
 Price-to-Book = [USD Volume/Total VWAP] x 100.

A.4.3: Ship Prices By Class (USD per Ship)



Source: ATMTA, Inc. Economics Department



A.4.4: Annualized Total and Net ATLAS Earnings per Market Value (ATLAS/USD)

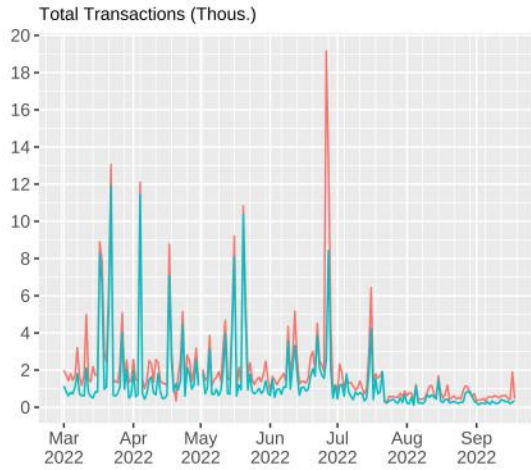


Source: ATMTA, Inc. Economics Department  
 Notes: Daily Total ATLAS earnings and net ATLAS earnings are first multiplied by 365 and then divided by the USD market value of employed ships in the class.

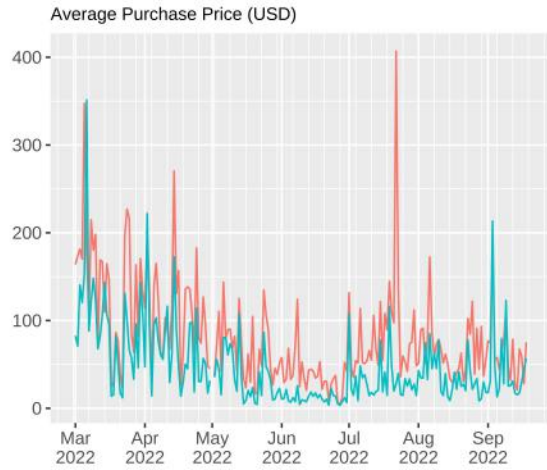


### A.4.5: Partial Depositors Ship Market Summary

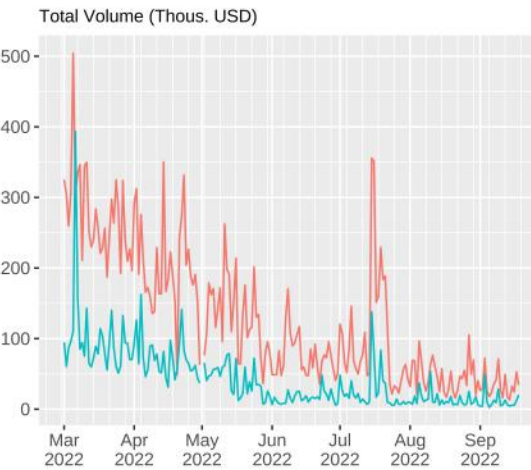
A



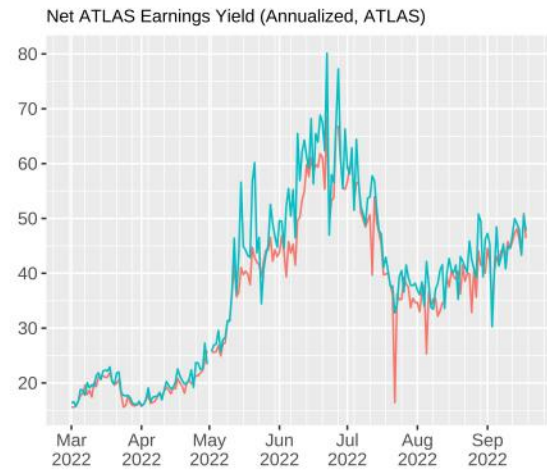
B



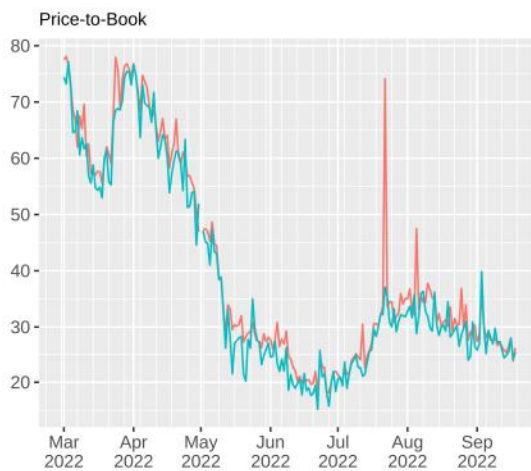
C



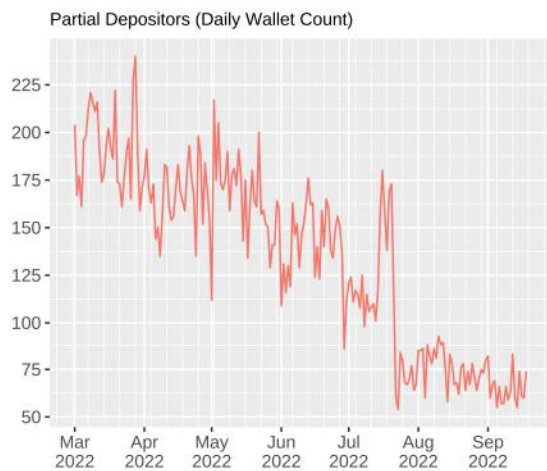
D



E



F



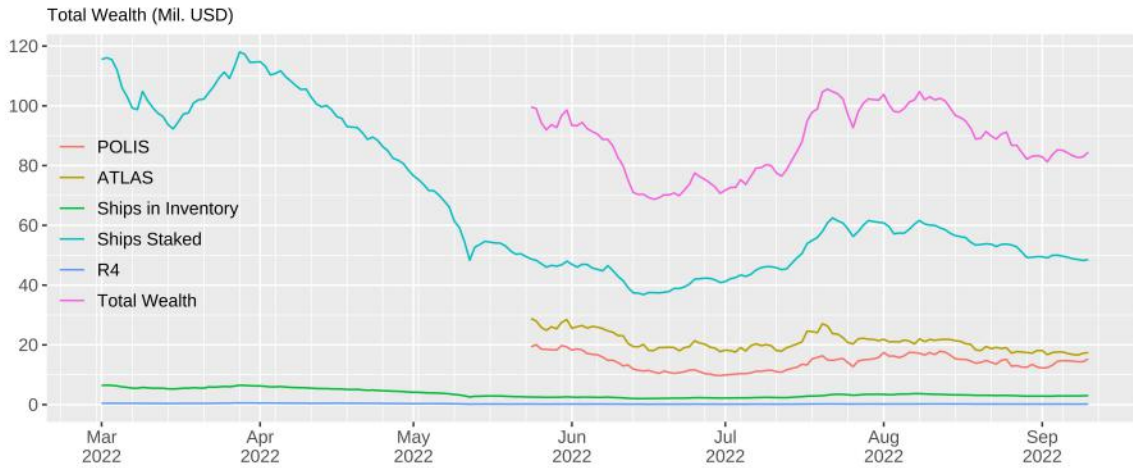
— Marketplace — Partial Depositors

Source: ATMTA, Inc. Economics Department.  
 Notes: Total volume is the sum of all transactions converted to USD. Net ATLAS earnings yield = [Net ATLAS earnings of the purchased ships x 365]/[Market Volume (in USD)];  
 Price-to-Book = [USD Volume/Total VWAP] x 100.

## A.5 Aggregate Wealth

### Aggregate Wealth: The Star Atlas Universe

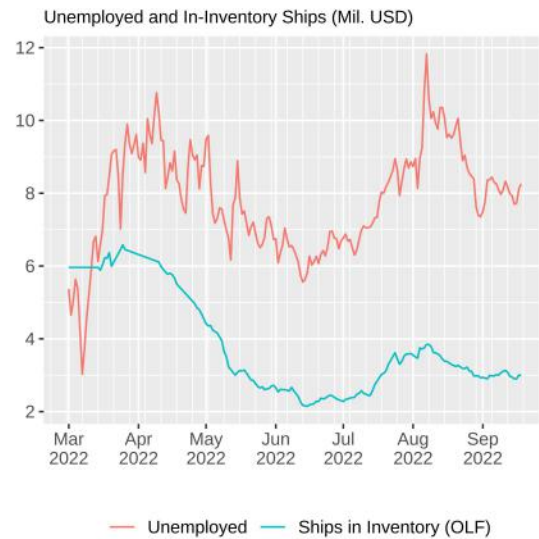
A



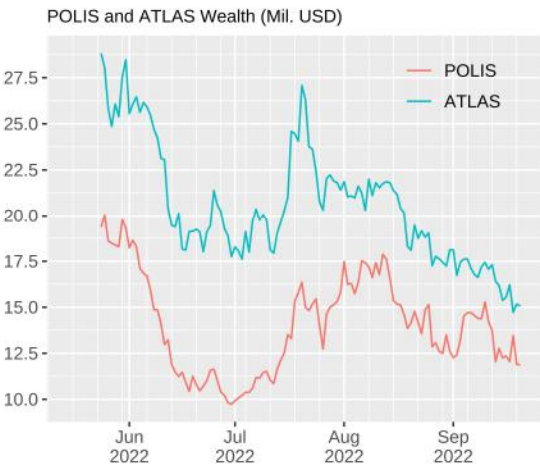
B



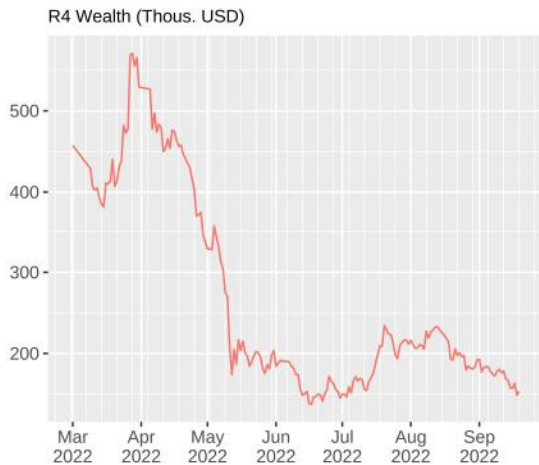
C



D



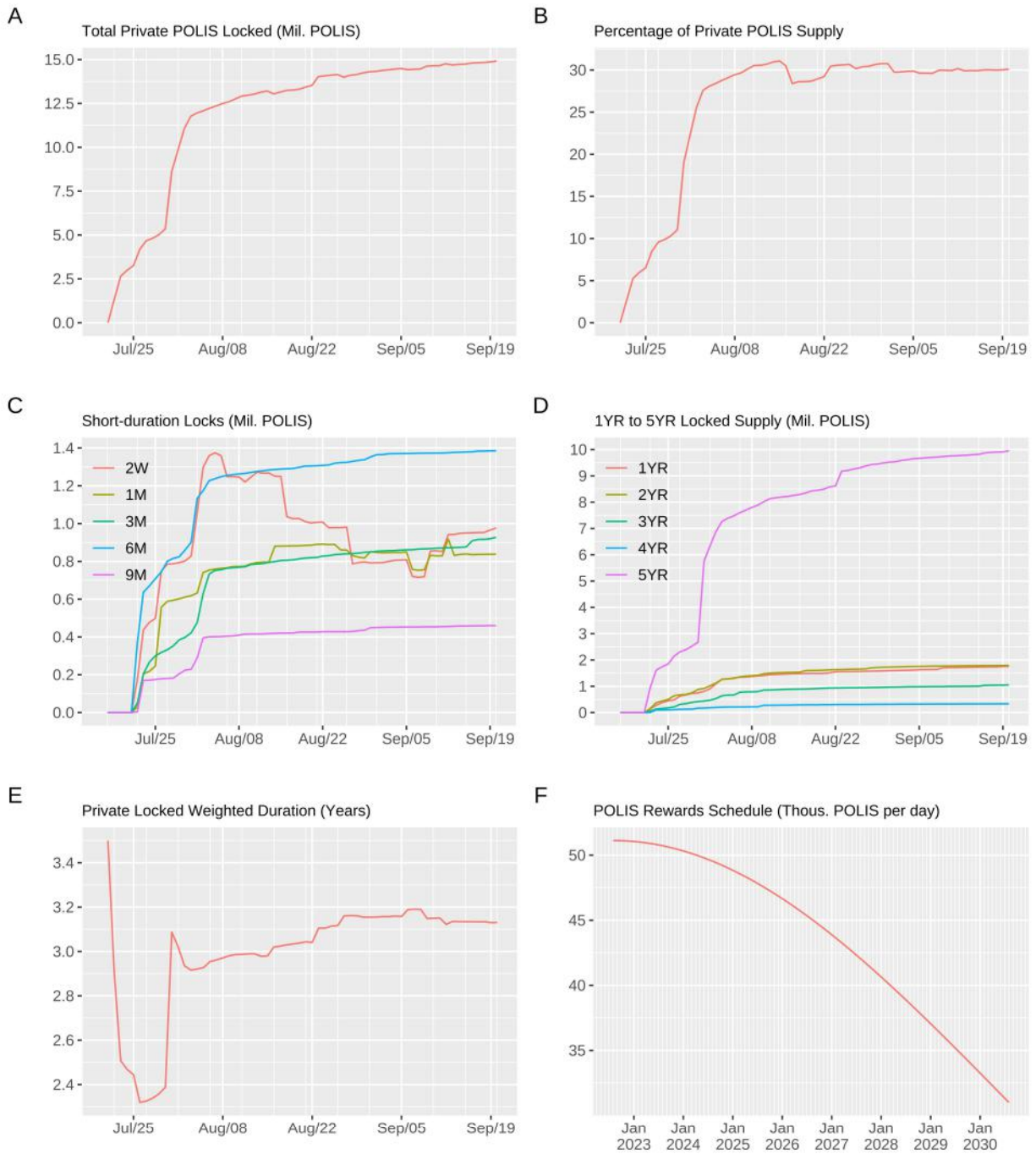
E



Source: ATMTA, Inc. Economics Department; Notes: Aggregate wealth is the sum of privately held R4 inventory, Ships, POLIS, and ATLAS - in millions of USD. ATLAS and POLIS values are interpolated from May 27th through June 16th.

## A.6 POLIS Locking Details

### Private POLIS Locked Statistics



Source: ATMTA, Inc. Economics Department  
 Notes: All data refers to privately held and privately locked POLIS, and therefore excludes Corporate Accounts.

## Monthly Labor Force Summary Tables

Table 7: Labor Force Summary (Daily Averages)

Action	Indicator	Mar	Apr	May	Jun	Jul	Aug
<b>Initial Deposits</b>	Avg Price	216.85	193.25	159.89	26.90	21.32	67.95
	Thous. da	2.44	2.79	0.86	4.90	5.58	3.39
	Thous. USD, da	528.06	539.98	136.73	131.80	119.05	230.13
<b>Partial Deposits</b>	Avg Price	57.72	41.54	23.26	9.43	32.77	33.34
	Thous. da	2.01	1.75	1.97	1.72	0.87	0.46
	Thous. USD, da	115.82	72.87	45.74	16.25	28.54	15.34
<b>Withdrawn Ships</b>	Avg Price	227.26	201.80	106.81	29.34	15.83	62.27
	Thous. da	2.69	1.69	1.46	2.14	6.01	2.21
	Thous. USD, da	611.08	342.02	155.90	62.74	95.10	137.50
<b>Net LF</b>	Avg Price	17.22	16.01	19.33	10.80	123.16	23.93
	Thous. da	1.69	1.58	1.30	2.16	0.42	0.10
	Thous. USD, da	29.07	25.23	25.09	23.35	51.57	2.50
<b>Re-filled Ships</b>	Avg Price	216.62	158.85	77.83	49.45	55.96	59.56
	Thous. da	337.70	235.19	441.48	283.07	562.34	328.08
	Thous. USD, da	73153.38	37360.05	34359.05	13999.14	31469.44	19542.11
<b>Rwds Harvested</b>	Mil. da	8.64	5.13	4.66	4.45	5.14	4.87
<b>Rwds Withdrawn</b>	Mil. da	1.23	0.81	0.85	1.16	0.57	1.14
<b>Total Rwds</b>	Mil. da	12.90	5.42	5.70	8.64	6.31	5.81



Table 8: Medium-to-Commander: Ship Class Economic Summary (monthly percentage changes)

Class	Indicator	Mar	Apr	May	June	July	Aug
<b>Commander</b>	Net Wages	-3.57	-2.94	-3.59	-1.40	4.20	0.92
	Avg Net Wage	-0.10	-0.24	0.12	0.03	-0.01	0.01
	Employment Rate	-4.75	-0.99	-3.70	-1.00	4.22	0.05
	Labor Force	1.27	-1.70	0.00	-0.43	0.00	0.86
	Employed MV	-22.04	-47.30	-38.42	-3.26	39.18	-22.50
	Labor Force MV	-17.30	-46.14	-35.17	-2.22	34.90	-22.01
	Ship Price Index	-22.52	-43.53	-37.43	22.94	20.82	-29.02
	Partial Dep MV,1000s	0.00	70.00	38.89	31.00	0.00	0.00
	Partial Dep,num	0.00	1.00	1.00	1.00	0.00	0.00
	<b>Capital</b>	Net Wages	0.28	-5.22	2.52	4.75	10.97
Avg Net Wage		0.01	0.20	0.04	0.36	0.14	-0.09
Employment Rate		-2.62	-4.42	-1.57	-0.54	3.34	-0.77
Labor Force		2.89	-1.00	4.04	4.92	7.48	0.42
Employed MV		-4.99	-38.51	-48.78	-4.17	26.65	-15.61
Labor Force MV		-2.15	-34.65	-45.71	-3.29	21.75	-15.31
Ship Price Index		-0.73	-38.55	-64.94	-32.29	66.95	-28.67
Partial Dep MV,1000s		122.15	94.68	183.04	65.42	125.72	25.03
Partial Dep,num		5.00	4.00	16.00	9.00	17.00	2.00
<b>Large</b>		Net Wages	-0.16	-5.24	-0.43	0.72	8.69
	Avg Net Wage	0.24	0.27	0.64	0.50	1.60	0.05
	Employment Rate	-3.57	-3.08	-2.48	-1.48	1.12	0.16
	Labor Force	3.17	-2.43	1.41	1.69	5.97	-0.32
	Employed MV	-8.82	-39.00	-65.82	-27.89	59.99	-17.99
	Labor Force MV	-5.38	-35.59	-63.65	-26.29	58.61	-18.56
	Ship Price Index	0.80	-38.13	-59.14	-38.75	57.72	-15.47
	Partial Dep MV,1000s	673.28	354.33	305.43	77.64	249.80	64.82
	Partial Dep,num	97.00	53.00	86.00	34.00	78.00	17.00
	<b>Medium</b>	Net Wages	-0.46	-7.55	-1.90	-4.99	3.78
Avg Net Wage		0.06	-0.09	0.23	-0.27	-0.14	0.00
Employment Rate		-1.73	-7.39	-1.95	-4.59	1.49	-2.07
Labor Force		1.21	-0.08	-0.18	-0.14	2.43	-0.20
Employed MV		0.23	-55.16	-47.69	-23.72	41.39	-22.23
Labor Force MV		2.10	-47.63	-46.06	-18.66	39.42	-20.19
Ship Price Index		-0.63	-35.97	-55.92	-10.79	30.60	-12.49
Partial Dep MV,1000s		668.36	429.52	184.91	60.59	120.14	111.50
Partial Dep,num		351.00	222.00	168.00	83.00	136.00	110.00

*Note:*

Month over month percentage changes for everything except partial deposits. Partial deposits by market value is in thousands of USD. Partial deposits by number is the sum of partial deposits over the month.

Table 9: XXS-to-Small: Ship Class Economic Summary (monthly percentage changes)

Class	Indicator	Mar	Apr	May	June	July	Aug
<b>Small</b>	Net Wages	-0.58	-6.01	-2.59	-2.53	2.96	-1.87
	Avg Net Wage	-0.04	-0.21	0.10	-0.16	-0.37	0.06
	Employment Rate	-1.99	-5.60	-2.86	-2.90	0.23	-1.55
	Labor Force	1.45	-0.21	0.17	0.53	3.10	-0.37
	Employed MV	0.47	-52.05	-54.47	-23.20	44.52	-24.39
	Labor Force MV	2.52	-46.27	-51.65	-19.92	43.80	-22.60
	Ship Price Index	1.18	-38.18	-65.41	-22.57	40.25	-16.81
	Partial Dep MV,1000s	795.67	621.85	273.94	100.84	163.10	130.21
	Partial Dep,num	1374.00	1078.00	913.00	490.00	707.00	510.00
	<b>XS</b>	Net Wages	-4.88	-15.16	-3.59	-12.55	6.23
Avg Net Wage		-3.30	-0.37	0.68	-3.14	0.80	0.62
Employment Rate		-5.13	-16.21	-3.89	-9.89	3.88	-1.26
Labor Force		3.55	1.42	-0.37	0.48	1.55	-0.10
Employed MV		1.55	-62.77	-57.30	-31.47	48.01	-27.43
Labor Force MV		7.95	-47.15	-53.96	-19.02	43.35	-27.38
Ship Price Index		-17.15	-36.74	-63.46	-49.21	63.65	-7.14
Partial Dep MV,1000s		273.97	153.23	55.06	25.02	35.44	38.44
Partial Dep,num		1894.00	1452.00	848.00	628.00	789.00	691.00
<b>XXS</b>		Net Wages	19.91	4.64	16.19	16.38	-0.61
	Avg Net Wage	-5.19	-4.15	-1.65	-2.55	0.43	0.00
	Employment Rate	-1.06	-8.35	3.59	2.12	-1.91	0.37
	Labor Force	26.17	17.14	14.25	16.81	0.87	-0.29
	Employed MV	22.05	-49.84	-50.60	-2.65	48.12	-21.62
	Labor Force MV	25.41	-38.82	-54.25	-2.25	49.05	-23.71
	Ship Price Index	-18.35	-65.73	-57.87	7.57	41.53	-36.94
	Partial Dep MV,1000s	535.66	459.84	205.62	128.73	90.55	54.97
	Partial Dep,num	56460.00	51546.00	56120.00	52152.00	24365.00	12913.00

*Note:*

Month over month percentage changes for everything except partial deposits. Partial deposits by market value is in thousands of USD. Partial deposits by number is the sum of partial deposits over the month.

Table 10: ATLAS Rewards By Class (Daily Averages)

Action	Indicator	Mar	Apr	May	Jun	Jul	Aug
<b>Ships</b> (Thous. daily avg)	Capital	0.335	0.257	0.229	0.231	0.266	0.274
	Commander	0.103	0.088	0.080	0.072	0.082	0.073
	Large	1.004	0.804	0.784	0.656	0.736	0.733
	Medium	3.281	2.735	2.287	2.079	2.243	2.069
	Small	12.981	9.894	8.493	7.054	8.271	7.023
	XXS	9.450	7.819	6.433	5.918	6.040	5.564
	XS	52.393	67.080	79.301	100.448	133.943	108.420
<b>Rewards</b> (Mil. daily avg)	Capital	1.096	0.964	0.979	0.861	1.027	1.153
	Commander	0.965	0.780	0.792	0.844	0.835	0.881
	Large	1.183	0.992	1.092	0.889	1.048	1.072
	Medium	1.276	1.073	1.025	0.941	1.047	1.158
	Small	1.403	1.241	1.222	1.160	1.315	1.194
	XXS	0.349	0.264	0.278	0.239	0.243	0.275
	XS	0.142	0.172	0.188	0.202	0.255	0.238
<b>Avg per ship</b>	Capital	3500.776	3872.031	4270.727	3847.397	3866.939	4512.842
	Commander	9356.704	8561.230	9899.551	10541.063	10157.324	12106.866
	Large	1217.779	1234.558	1491.905	1401.255	1422.705	1510.452
	Medium	351.281	392.439	448.099	438.191	466.784	505.353
	Small	111.712	125.381	148.626	164.415	170.357	175.751
	XXS	35.727	33.810	39.070	40.314	40.312	47.748
	XS	2.712	2.742	2.449	2.015	1.966	2.196

Table 11: Employment and Earnings By Faction (Daily Averages)

Indicator	Faction	Mar	Apr	May	Jun	Jul	Aug
<b>Empl Mil. USD</b>	MUD	40.72	36.42	19.90	14.22	17.78	18.63
	ONI	30.41	26.73	14.63	10.40	13.19	13.88
	USTUR	29.38	26.73	15.22	10.79	13.51	14.70
<b>Empl Thous.</b>	MUD	89.23	96.58	99.30	106.96	134.74	129.67
	ONI	80.50	79.62	79.31	86.45	95.86	95.70
	USTUR	84.66	120.87	141.63	153.47	158.08	156.93
<b>Empl Price Index</b>	MUD	456.52	377.69	201.15	135.10	132.27	143.68
	ONI	377.38	336.12	184.37	120.85	137.17	144.97
	USTUR	357.36	223.38	108.88	70.33	85.33	93.73
<b>Empl rate</b>	MUD	0.83	0.80	0.75	0.73	0.77	0.75
	ONI	0.79	0.75	0.71	0.69	0.71	0.70
	USTUR	0.85	0.85	0.84	0.83	0.82	0.81
<b>Empl rate (by MV)</b>	MUD	0.95	0.92	0.88	0.87	0.87	0.84
	ONI	0.91	0.88	0.83	0.81	0.82	0.80
	USTUR	0.94	0.92	0.88	0.86	0.86	0.86
<b>Labor Force Mil. USD</b>	MUD	42.86	39.35	22.44	16.42	20.46	22.09
	ONI	33.46	30.39	17.49	12.88	16.00	17.29
	USTUR	31.24	29.08	17.19	12.48	15.65	17.19
<b>Labor Force Thous.</b>	MUD	107.35	120.26	133.20	145.25	174.85	172.76
	ONI	101.87	106.13	112.38	124.53	134.88	137.10
	USTUR	99.93	141.82	168.67	184.69	192.32	193.95
<b>LF Price Index</b>	MUD	399.98	328.67	169.86	113.95	117.26	127.89
	ONI	328.33	286.93	156.16	103.88	118.36	126.06
	USTUR	320.01	207.03	103.09	67.59	81.30	88.63
<b>Net Wages Mil. ATLAS</b>	MUD	1.89	1.86	1.77	1.74	1.80	1.78
	ONI	1.40	1.35	1.29	1.27	1.34	1.33
	USTUR	1.34	1.35	1.34	1.34	1.38	1.40
<b>Net Avg Wages</b>	MUD	21.15	19.26	17.85	16.52	13.39	13.74
	ONI	17.44	16.98	16.25	14.74	13.97	13.90
	USTUR	16.33	11.22	9.47	8.71	8.75	8.90

*Note:*

Monthly averages of daily figures.



Table 12: MUD - Ship Summary

Action	Indicator	Mar	Apr	May	Jun	Jul	Aug
<b>Net LF</b>	Avg Price	15.7	10.1	21.4	5.3	1089.5	-66.2
	Daily Avg	296.4	388.2	183.5	1449.8	14.0	90.9
	Thous. USD, da	4.6	3.9	3.9	7.7	15.3	-6.0
<b>Initial Deposits</b>	Avg Price	314.1	307.1	177.5	17.7	13.1	171.1
	Daily Avg	505.0	345.6	288.7	1570.6	4539.5	273.2
	Thous. USD, da	158.6	106.1	51.2	27.8	59.4	46.7
<b>Partial Deposits</b>	Avg Price	107.7	51.0	20.0	5.7	34.5	33.0
	Daily Avg	283.7	534.1	624.0	1056.1	233.7	196.5
	Thous. USD, da	30.6	27.3	12.5	6.0	8.1	6.5
<b>Withdrawn Ships</b>	Avg Price	376.9	288.4	80.8	23.8	10.9	162.9
	Daily Avg	476.1	439.8	719.9	1074.8	4612.7	359.8
	Thous. USD, da	179.4	126.8	58.2	25.6	50.2	58.6
<b>Re-filled Ships</b>	Avg Price	250.0	197.6	103.5	65.0	64.0	66.6
	Daily Avg	69057.5	72545.9	76539.2	82618.6	114922.5	109473.1
	Thous. USD, da	17261.3	14335.3	7918.6	5370.3	7350.3	7288.6

Table 13: MUD - ATLAS Rewards Summary (Daily Averages)

Action	Indicator	Dec	Jan	Feb	Mar	Apr	May	Jun	Jul	Aug
<b>Ships (Thous. daily avg)</b>	All	10.55	36.67	29.81	27.09	29.38	30.79	37.69	67.98	50.62
	Harvested	9.73	33.54	25.85	27.50	27.99	30.07	35.40	56.79	51.94
	Withdrawn	0.91	1.95	1.11	0.48	0.45	0.80	1.07	4.77	0.36
<b>Rewards (Mil. daily avg)</b>	All	0.50	2.56	2.28	2.42	2.23	2.25	2.11	2.41	2.29
	Harvested	0.48	2.04	1.95	2.25	1.87	1.97	1.80	2.21	1.94
	Withdrawn	0.04	0.44	0.39	0.39	0.36	0.34	0.24	0.28	0.54
<b>Avg per ship</b>	All	47.07	69.76	84.57	89.34	78.27	72.99	55.96	39.25	45.15
	Harvested	47.26	60.74	72.99	76.38	66.90	63.32	50.95	37.58	34.80
	Withdrawn	44.82	224.76	363.45	815.00	804.43	477.08	221.22	59.77	1502.25

Table 14: ONI - Ship Summary

Action	Indicator	Mar	Apr	May	Jun	Jul	Aug
<b>Net LF</b>	Avg Price	-721.4	42.3	43.5	16.0	77.5	11.2
	Daily Avg	36.1	228.9	268.8	463.5	239.7	33.8
	Thous. USD, da	-26.0	9.7	11.7	7.4	18.6	0.4
<b>Initial Deposits</b>	Avg Price	139.6	125.5	142.3	36.4	42.3	25.1
	Daily Avg	1648.1	784.9	398.0	609.5	907.7	1257.3
	Thous. USD, da	230.1	98.5	56.6	22.2	38.4	31.5
<b>Partial Deposits</b>	Avg Price	102.6	90.9	37.6	10.2	19.8	27.3
	Daily Avg	272.0	319.3	364.8	582.8	395.9	207.3
	Thous. USD, da	27.9	29.0	13.7	5.9	7.8	5.7
<b>Withdrawn Ships</b>	Avg Price	151.1	136.3	118.1	29.9	25.6	25.7
	Daily Avg	1830.8	844.4	481.3	672.4	1034.6	1410.6
	Thous. USD, da	276.6	115.1	56.9	20.1	26.4	36.2
<b>Re-filled Ships</b>	Avg Price	203.3	184.3	95.3	60.4	69.7	72.4
	Daily Avg	62840.8	59271.6	61355.6	66901.0	78580.7	78700.4
	Thous. USD, da	12777.2	10921.3	5847.7	4040.1	5474.1	5701.4

Table 15: ONI - ATLAS Rewards Summary (Daily Averages)

Action	Indicator	Dec	Jan	Feb	Mar	Apr	May	Jun	Jul	Aug
<b>Ships (Thous. daily avg)</b>	All	16.27	41.00	28.76	25.33	21.94	21.69	26.48	34.58	28.90
	Harvested	14.48	36.08	24.65	24.29	20.39	21.21	24.95	30.20	28.41
	Withdrawn	1.99	3.60	1.37	1.83	0.87	0.53	0.67	1.07	1.41
<b>Rewards (Mil. daily avg)</b>	All	0.42	1.93	1.65	2.02	1.63	1.59	1.58	1.61	1.70
	Harvested	0.40	1.54	1.44	1.65	1.38	1.38	1.32	1.50	1.51
	Withdrawn	0.03	0.32	0.26	0.53	0.25	0.26	0.21	0.16	0.34
<b>Avg per ship</b>	All	25.77	46.96	63.50	79.82	76.55	73.39	59.76	51.54	58.89
	Harvested	26.61	42.82	56.42	63.32	67.67	62.98	52.79	47.92	49.56
	Withdrawn	18.99	88.48	195.58	292.15	291.20	532.46	318.47	157.15	241.06

Table 16: USTUR - Ship Summary

Action	Indicator	Mar	Apr	May	Jun	Jul	Aug
<b>Net LF</b>	Avg Price	37.2	12.2	11.2	33.1	107.3	-404.6
	Daily Avg	1355.7	958.5	846.0	248.5	165.0	-20.1
	Thous. USD, da	50.5	11.7	9.5	8.2	17.7	8.1
<b>Initial Deposits</b>	Avg Price	432.2	255.6	169.6	72.5	78.3	305.6
	Daily Avg	363.2	221.5	197.0	190.2	322.1	108.3
	Thous. USD, da	157.0	56.6	33.4	13.8	25.2	33.1
<b>Partial Deposits</b>	Avg Price	38.7	22.4	19.7	22.4	55.0	45.9
	Daily Avg	1386.3	1089.0	913.9	268.5	213.3	105.8
	Thous. USD, da	53.6	24.4	18.0	6.0	11.7	4.9
<b>Withdrawn Ships</b>	Avg Price	405.9	271.6	158.1	59.7	51.2	131.0
	Daily Avg	382.0	246.6	258.5	184.2	360.0	224.0
	Thous. USD, da	155.0	67.0	40.9	11.0	18.4	29.3
<b>Re-filled Ships</b>	Avg Price	195.9	117.1	53.9	34.4	42.1	46.8
	Daily Avg	70720.5	103375.5	126990.6	133549.5	143902.4	139908.2
	Thous. USD, da	13853.5	12103.4	6849.1	4588.7	6057.3	6552.1

Table 17: USTUR - ATLAS Rewards Summary (Daily Averages)

Action	Indicator	Dec	Jan	Feb	Mar	Apr	May	Jun	Jul	Aug
<b>Ships (Thous. daily avg)</b>	All	21.61	42.03	28.85	26.64	33.51	42.22	55.95	59.59	44.35
	Harvested	16.45	35.35	23.71	27.15	32.18	41.96	53.96	53.47	45.60
	Withdrawn	5.70	5.32	2.43	0.37	0.25	0.29	0.18	0.37	0.22
<b>Rewards (Mil. daily avg)</b>	All	0.40	1.67	1.41	1.80	1.57	1.67	1.49	1.68	1.83
	Harvested	0.37	1.31	1.31	1.66	1.38	1.47	1.33	1.61	1.77
	Withdrawn	0.04	0.30	0.14	0.30	0.20	0.25	0.11	0.13	0.23
<b>Avg per ship</b>	All	18.41	39.66	54.17	67.64	48.42	39.65	26.67	31.24	41.15
	Harvested	21.81	37.05	53.54	57.00	42.88	33.92	24.72	29.07	36.25
	Withdrawn	7.55	57.00	60.63	820.07	774.62	970.25	596.26	353.18	1011.66